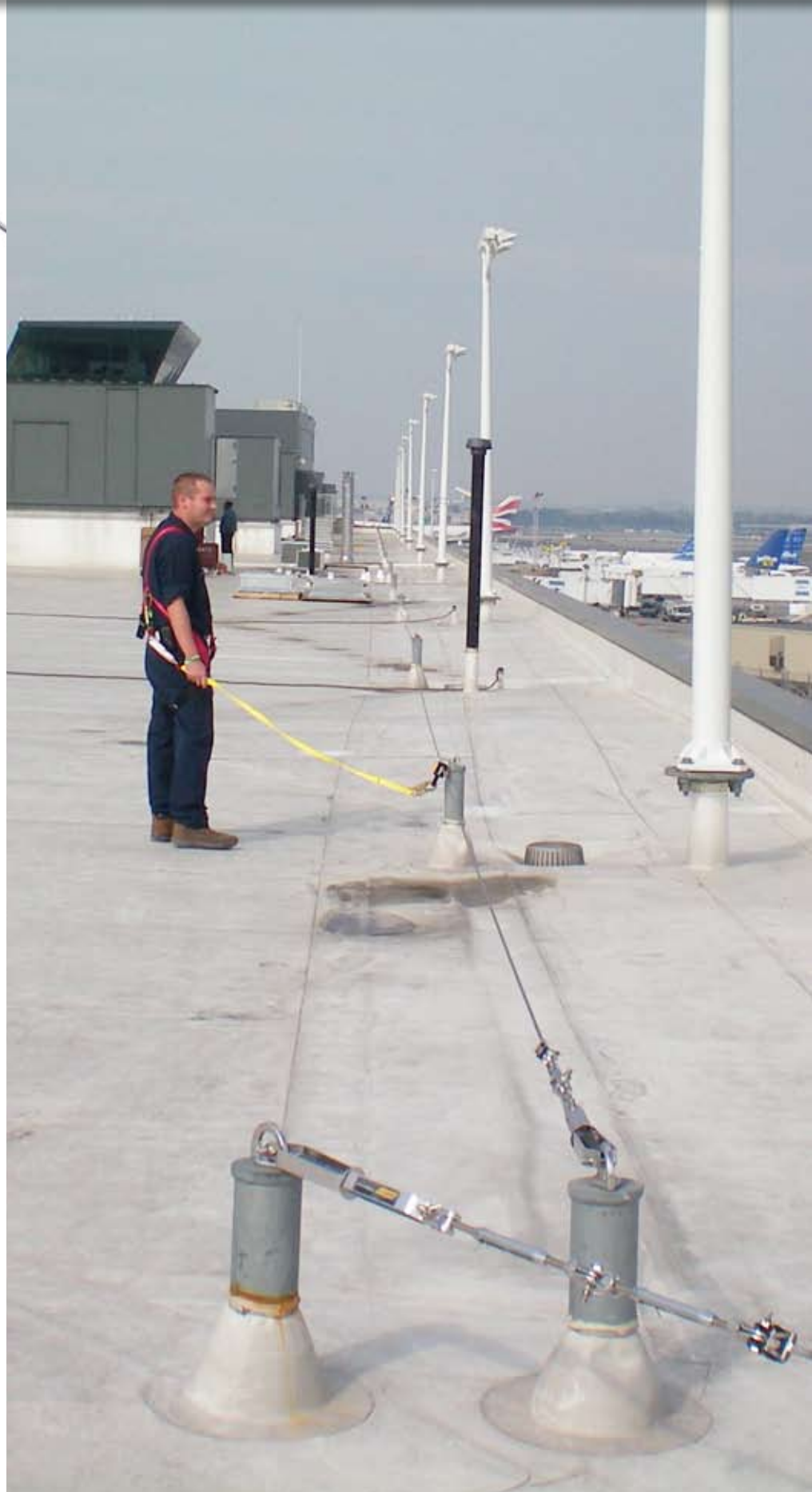


ROOFTOP FALL ARREST SYSTEMS



FLS Multi Span Fall Arrest Systems can be used to safely access an entire rooftop. This cable-based stainless steel fall arrest system is capable of unlimited lengths with pass-through capability. The systems are economical and user friendly. Featuring the patented Transfastener, users are not required to disengage from the system when crossing cable supports. Flexible Lifeline Systems' engineers are able to develop and install Rooftop Fall Arrest Systems that accommodate all your protocols.



ROOFTOP FALL ARREST SYSTEMS

Why Choose a Cable-based Solution?

FLS Rooftop Fall Arrest Systems offer many advantages.

Strong and Durable

A Flexible Lifeline System™ Multi-Span System features 8 mm diameter stainless steel cable providing excellent resistance to corrosion and wear with a minimum design life of 20 years. The stainless steel components are electro-polished to enhance corrosion resistance.

Aesthetically Pleasing

FLS Rooftop Fall Arrest Systems are discreet. The 8 mm cable is very subtle in appearance and the components are electro polished. The support posts typically stand up to a maximum of 18" high and can be color matched to virtually all roofing panels.

Versatile

The inherent flexibility of a cable-based system allows it to flow around corners, up and over peaks and valleys and around obstructions.

Cost Effective

The supports for an FLS cable system are generally positioned at approximately 25'-30' intervals to coincide with existing structural members, where required.



FEATURES

- Quick and easy to install.
- Posts can be used in fall arrest and restraint systems.
- Compatible with most major roofing systems.
- With the optional Force-Limiting deployable posts, the systems do not need to attach to underlying structural steel resulting in lower overall costs.
- Small unobtrusive post design allows system to blend with building and maintain architectural integrity.
- 100% fall protection for multiple users.
- 100% durable marine grade stainless steel.
- All major components serial numbered for full traceability.
- Built-in user friendly tension indicator.
- In-line energy absorber to reduce end loads.
- All weather use so your workers can stay on the job.

The Latchways Transfastener's ingenious starwheel design allows continuous movement along the cable and eliminates the need for people using the system to detach and reattach to the system when changing direction or crossing cable supports.

